



For Mid-Sized
and Large Businesses

Sage Geode

The Supply Chain software that simplifies managing distribution Channels!

Sage Geode

can be adapted to any sized company's logistical challenges



Sage Geode is a Warehouse Management System (WMS) that will optimize the available space and logistical operations within the warehouse, from receiving to shipping. Sage Geode integrates seamlessly with automated conveyor systems.

Sage Geode, provides your company with International Support for all development requirements, thanks to Sage's presence around the world in all major countries. The optional Web Based Architecture allows multi structured companies to have a centralized database, while also offering remote sites and company branches the option to operate independently.

Sage Geode was designed by professionals and complies with international standards and all types of companies and distribution service providers in various sectors: Logistic Suppliers, Industrialists working in all sectors, Distribution and Trading companies, Healthcare Institutions, Agricultural Corporation, etc. Several hundred warehouses are currently equipped with the Sage Geode solutions in France and internationally for over 1,500 customers, from SMEs to major corporations.

Sage Geode product offering (Standard, Advanced, and Premium) allows flexibility to satisfy the unique distribution requirements of any type of company. Distribution processes are easily optimized by Sage Geode, providing the highest level of performance.

Rely on the know-how of Sage Geode for every step of Supply Chain Execution



1 and 2. Receiving

- Delivery bay and carrier meeting schedule
- On "the fly" reception
- Cross docking
- Sampling upon receipt and quality control

3. Addressing and finding stock locations

- Multiple products, multiple batches and multiple consignors
- Local picking
- Container equivalence
- Dynamic location management

1 Improve productivity

Sage Geode contributes to organizing and streamlining the employees' activities (movement, picking, etc.) within the warehouse, by measuring and distributing the workloads as well as assigning responsibilities to end-users. The Sage Geode advanced functions enable you to anticipate fluctuations in levels in productivity and other activities (workload peaks, seasonality) and to keep management well informed.

2 Manage your industrial infrastructure more efficiently

Sage Geode ensures automated management of your machinery and industrial means (trans storers, pick to light, conveyers, etc.) by assigning everyone with missions compatible with their role, their job, their localization. By integrating RFID technology, Sage Geode eliminates unnecessary moves.

3 Increase the quality and the reliability of distribution channels

Sage Geode complies with all the regulatory and sectoral standards. The solution manages standards such as GENCOD for mass retailing, GALIA for the automotive sector, INOVERT

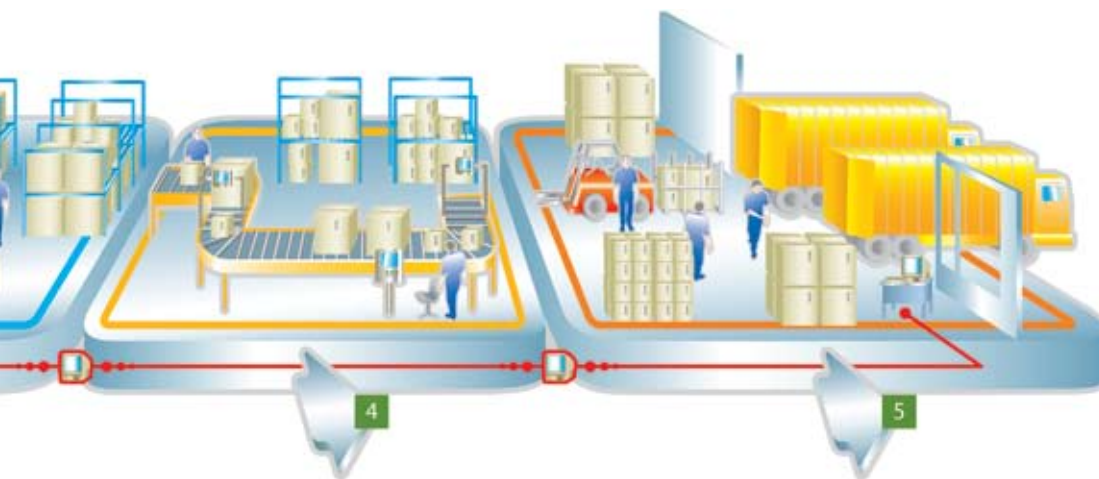
for transportation and it complies with the regulatory constraints related to the physical management of hazardous products. By precisely and carefully tracing every operation carried out in the warehouse, Sage Geode also contributes to reducing the number of preparation anomalies and improving your order processing, thereby improving the quality of your customer service.

4 Optimize Warehouse storage

Sage Geode powerful optimization algorithm creates a 3 dimensional model of the warehouse storage space and the movements within the main aisles. Sage Geode optimizes the warehouses space and provides support for upgrading storage structures.

5 Sage Geode supports your growth

The modularity and the dynamic scalability of the Sage Geode parameters enable you continuously benefit from a solution suited to the development of your business expertise. Sage Geode is there at each step of your organisation's evolution.



4.Preparation

- Optimized management of preparation loads
- Operator movement optimization
- Advanced packing assistance functions
- Multi-mode preparation management

5.Delivery

- Stock on dock management
- Multi-site delivery
- Dispatching round management, related pre-invoicing
- Printing carrier documents

6.Stock

- Hazardous material management
- Inventory management
- Assembly order management
- Automated replenishment management
- Quality control of stock

Sage Geode

an Enterprise solution that grows with your Distribution and Logistical needs

Location

- Locations configuration (reserve, picking, ...)
- Assigned location, not assigned picking location
- Multi picking locations/item
- Mono batch picking location
- Picking location optimization

Item

- Containers management (maximum 5 levels/items)
- Consumables management
- Batch/lot control
- Serial number control, stock reservation management
- Dates management (7 different dates/item)
- Rotation classes optimization and assignment classes management

Dispatch

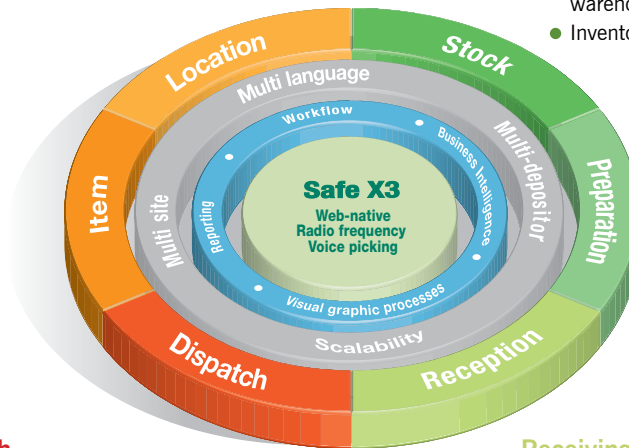
- Round delivery management
- Multi site dispatch management
- Carrier Automatic determination for an order
- Carrier Costs calculation
- Dispatch cancellation and postponing
- Transportation documents printing
- Proof of delivery

Stock

- Stock management
- Transfers and external warehouse management
- Replenishment (min/max, override, source control) of picking location
- Product consolidation and warehouse reorganization
- Inventory management

Preparation

- Automatic or manual orders launching
- Multi preparation modes
- Cross docking preparation mode
- SSCC management
- Palettization help tool



Receiving

- Expected input
- Carrier appointment and dock scheduling
- Reception management, blocking and non conformity management
- Quality control and inbound sampling
- Manual or automatic allocation of locations
- Validation or cancellation of put away

Useful technology working for logistics

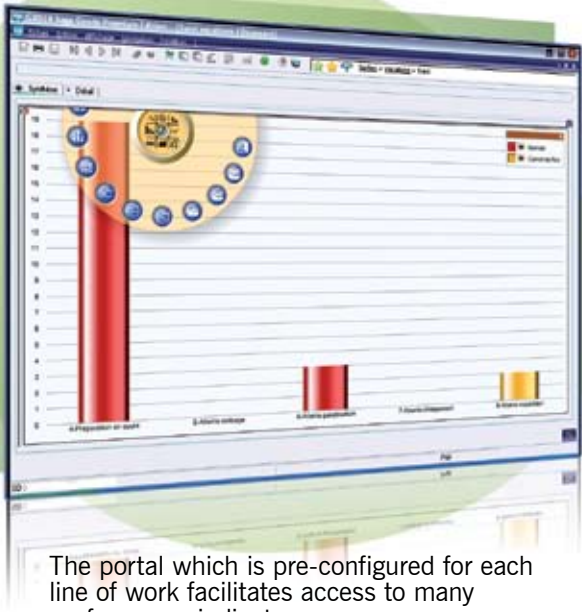
- Portable procedures in vocal and/or radio frequency mode.
- WEB Access has been designed for secure access to your Business Systems.
- A dynamic and intuitive Web 2.0 portal which provides easy access to the data extracted from Sage Geode and/or external applications.
- Powerful notification management to control and automate all your processes (workflow).
- Technological standards at your finger tips (OS, SGBD).
- Sage Geode is being used as the preferred Logistical and Distribution Software of choice by over 2,000 Companies Worldwide.
- At the heart of Sage Geode software architecture is the SAFE* X3 Software Architecture. The platform allows for flexible customization and includes a Native Development Environment.

- Sage Geode features an integrated Visual Process Editor, allowing easy graphical mapping of any process within the company.
- Quick and simple Integration. Web Services, E-Commerce can be seamlessly integrated with your companies IT infrastructure and systems.

Various optional modules enhance and complete this solution:

- **Sage Mapping:** Dynamic optimization of the picking locations,
- **Sage Madrid:** Communication with the industrial means,
- **Sage Geoplo:** Pre-billing of the logistics services,
- **Sage Geomips:** Real-time management of the radio-frequency and vocal missions.

* SAFE X3 (Sage Application Framework for the Enterprise) is the technological platform which is common to the Sage ERP X3, Sage Geode, Sage HR Management and Sage FRP Fixed Assets solutions.



The portal which is pre-configured for each line of work facilitates access to many performance indicators.

“ Sage Geode manages all our finished product flows. The three sites are managed via radio frequency, with different management rules for the American site. Thanks to Sage, we now work with a totally integrated and highly centralized management tool. L'Occitane is an active and dynamic company which is constantly evolving: Sage Geode is there to support us every day and help us carry out development projects.

Emmanuelle LIEF - ERP-WMS Manager, L'OCCITANE

Assets that make the difference

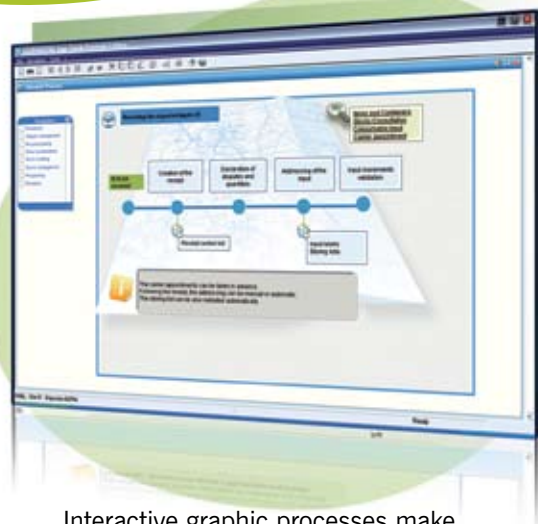
- A wide functional perimeter
- A multi-site, multi-depositor and multilingual solution
- Quick return on investment
- Autonomous and/or totally integrated into the company's information system
- Integrates seamlessly with Sage's Enterprise software solution
- Extensive development support available internationally
- A high level of expertise covering all logistics-related fields
- A global approach to software design, catering for global business needs and requirements with an Expert Development Team near you



“ Thanks to Sage Geode, we automatically manage two aspects related to the obligations which follow from the Seveso ranking of our warehouse. The first one concerns warehouses. Each product which comes in belongs to a class depending on storage criteria and has to be assigned to a specific area. Additionally, for every product class, we have a maximum storage authorization which must never be exceeded. The second specificity of hazardous material management concerns transportation. The rules are very strict. The Sage Geode solution, which is compatible with Windows, is flexible and user-friendly. Tracking, updating and development are quick and easy.

Viviane PATTYN
 IT Supervisor

Laurent BIENNE
 Site Manager, CAPSERVAL



Interactive graphic processes make handover easier for the users.

Sage makes company management easier

An international group and a worldwide leader, Sage develops, edits and sells management software and related services for companies.

Its solutions cover all areas of company management: accounting and financial management, payroll and human resources, business management and e-commerce, production management, customer relationship management. These solutions integrate management tools which provide the company's decision-makers with access to relevant information.

Local R&D

Sage locally develops solution targeting companies in the various countries where it is present. This enables us to quickly provide customers with software that complies with local regulations and which meets all their needs, regardless of their areas of application.

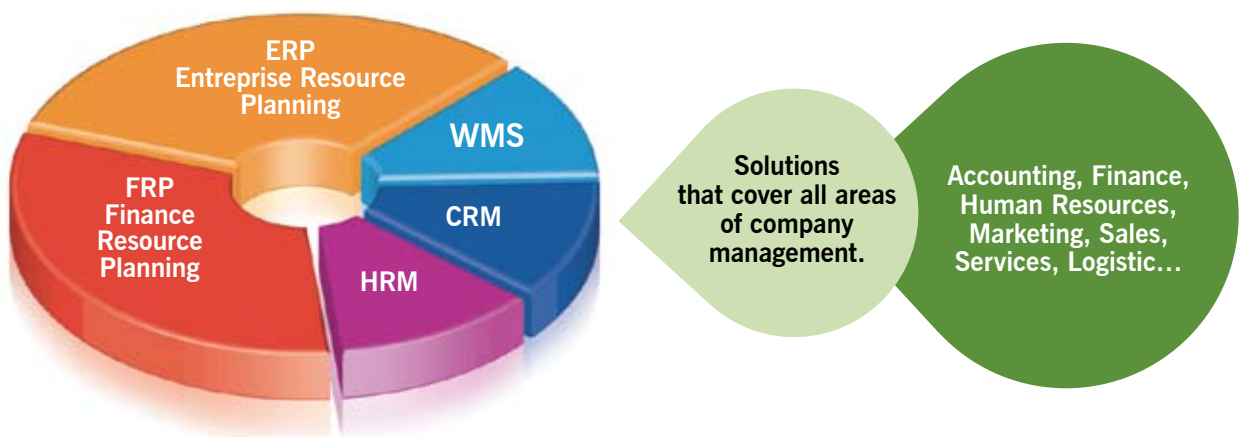
Upgraded legal monitoring

Sage assists its customers in their growth, thanks to R&D investments which enable us to anticipate legal, tax and technological evolutions.

Softline ACCPAC - The SME and mid-market business division of Sage in Africa

With over 250,000 customers and more than 3,500 authorised dealers, Softline is the number one provider of management solutions for medium and large businesses in Africa.

Our 1,200 employees make up the number one organisation dedicated to this market segment in Africa. Twenty five percent of Sage staff globally work in Research & Development to offer simple, scalable and innovative solutions.



Softline ACCPAC Partners provide professional services that suit your needs

Our partner experts offer you support throughout your project's life by providing a full range of professional services. Our 150 + consulting partners specialise in our applications and will put their expertise and methodology at your service.

1 Assistance at your service

Our partner teams are responsible for providing the best possible assistance, thereby guaranteeing the durability of your management system and therefore of your investment.

Depending on the category of your contract, you may benefit from a whole range of services and advantages: personalized assistance for software covered by the contract, providing of updates to benefit from the functional and technological evolutions of your software packages, etc.

2 Consultation at every step of your software product's life cycle

In order to successfully implement your software project, our partner team of consultants, project managers, task and product experts guide and advise you during the launch, the implementation, the daily operating and the scaling of your project:

- Support (methodology, functional and technological expertise) for your projects,
- Tailor-made consultation services,
- An Applicative Third-Party Maintenance offer.

3 Training, the cornerstone of successful operations

Sage offers software training sessions for its clients. Whether in person or at distance, customized or standard, these training sessions aim to:

- Support your skill-building drives, promoting optimum use of the various software functions,
- Train you to optimize the management settings of our software, encouraging best practices and introducing the available tools and methods to meet your needs,
- Certify and enhance your know-how.



They've chosen Sage Geode

ASSISTANCE PUBLIQUE HOPITAUX DE MARSEILLE • ARMEE DE TERRE • AUTOMOTIVE PRODUCTS • BARTOLINI • BRICO • BULL • CALBERSON • CAPSERVAL • CASTORAMA • CAUSSADE • CAVEWOOD TRANSPORT • CHALLENGE INTERNATIONAL • CHAMPAGNE CEREALES • CHANTELLE • CLUB DES CREATEURS DE BEAUTE • CHAVENEAU BERNIS • CODICO • CREMONINI RESTAURATION • DIJON CEREALES • DISTRIBUCAO LUIS SIMOES • DYADEM • ECTRA • EWALS CARGO CARE • EXEL LOGISTICS • FISHER BIOBLOCK SCIENTIFIC • GEODIS • G. M. F. • GRANTIL • HAMA • HESSENATIE • HEPPNER • KUHNE & NAGEL • L'OCCITANE • MICHELIN • MPSA - MASSA • MR BRICOLAGE • N R J • PEBEO • PNY TECHNOLOGIES • RELAIS H • SAINT-GOBAIN ABRASIFS • SHARK • SCHNEIDER ELECTRIC • TEXDECOR • T'NB • VACHETTE • VALEO DISTRIBUTION • WEBER & BROUTIN • WYETH LEDERLE

Softline ACCPAC

102 Western Services Road, Gallo Manor ext. 6,
Johannesburg, 2191

Tel: + 27 11 304 2000 Fax: + 27 11 304 2030

strategicsales@accpac.co.za

www.accpac.co.za

 **Softline ACCPAC®**
the future of better business